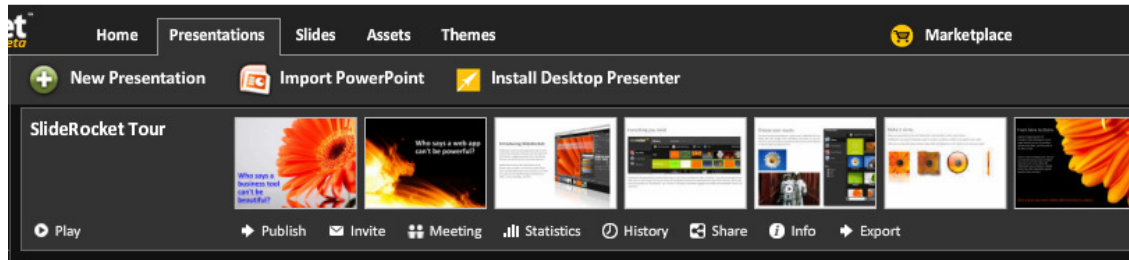
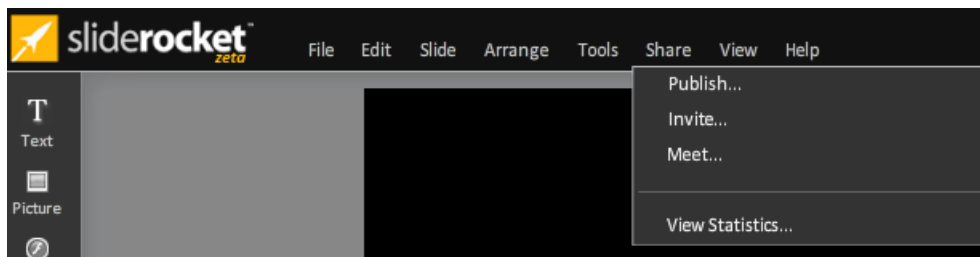


## Embedding a Presentation

SlideRocket presentations are easy to add to a website. Users can embed a presentation into a website using the HTML provided or creating custom HTML. If changes are made to the presentation after it is embedded the changes will automatically update the presentation. Since SlideRocket is a Flash-based application, the presentation will play the same on a PC, Mac or Linux computer.

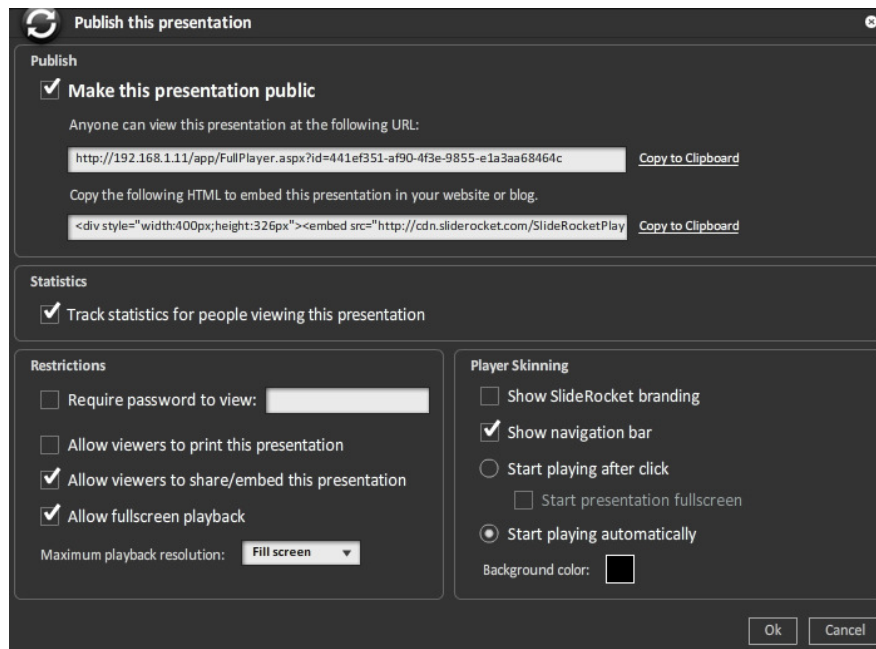


1. Click on the **Presentations** tab
2. Click on the desired presentation once and the **Publish** button will appear under it
3. Or in the editor click on the **Share** button
4. Click on the **Publish** button



5. Check **Make this presentation public**
  - a. Click on **Copy the Following HTML to embed this presentation into your website or blog** then paste the HTML into your website editor
  - b. The HTML will look similar to:

```
<div style="width:400px;"><embed
src="http://cdn.sliderocket.com/SlideRocketPlayer.swf" flashvars="id=441ef351-
af90-4f3e-9855-e1a3aa68464c" width="400" height="300"
allowFullScreen="true" type="application/x-shockwave-flash"></embed><div
style="font-size:9px;color:#444444;font-family:verdana,arial;text-
align:center">Launch your own <a style="text-decoration:none;"
href="http://www.sliderocket.com/">SlideRocket</a>
presentation!</div></div>
```



6. Turn on **Statistics**:
  - a. Check **Track statistics for people viewing this presentation**: Allows SlideRocket to track the statistics of who views the presentation, how long it was viewed, which slides they looked at and how many times this presentation is viewed
7. Set **Restrictions**: These are all optional choices to protect the embedded presentation
  - a. **Require password to view**: Sets a password to view this presentation
  - b. **Allow viewers to print this presentation**: Allows viewers of this presentation to print it
  - c. **Allow viewers to share/embed this presentation**: Sets whether viewers of this presentation are allowed to email it or embed it into their own website
  - d. **Allow fullscreen playback**: Sets whether viewers of this presentation can toggle to fullscreen playback
  - e. **Maximum playback resolution**: Sets the maximum resolution that the presentation can be viewed. This setting will prevent presentations from being scaled larger than the actual resolution during playback
8. **Player Skinning**: Sets how the embedded presentation will be displayed
  - a. **Hide SlideRocket branding**: Sets whether the SlideRocket branding should appear above the play button
  - b. **Hide navigation bar**: Sets whether the SlideRocket navigation bar should appear in the player
  - c. **Start playback automatically**: Sets whether the presentation will start automatically once loaded or wait for the user to click to start
    1. **Start presentation full screen**: Sets whether the presentation will start fullscreen. This option is only available when start playing after clicked is selected

- d. **Start playing automatically:** Sets whether the presentation will start automatically once loaded
- e. **Background Color:** Sets the background and boarder color of the player









**ADVANCED NOTE:** Presentations set to auto advance will not have statistics recorded, even if the box is checked. For more information, view the guide for Statistics at:

<http://www.sliderocket.com/support/documentation.html>

## Navigations in the Embedded Player

The **navigation bar** across the bottom of the SlideRocket embedded player has the following options



-  Returns presentation to the beginning
-  Advances to next slide
-  Returns to previous slide
-  Slide 1 of 16 Allows the viewer to jump forward or backward to a specific slide in the presentation
-  Adjusts audio
-  Opens window to email a link to the presentation, embed the presentation or send a link to Twitter
-  Allows presentation to be printed or exported
-  Expands presentation to a fullscreen or closes out of fullscreen