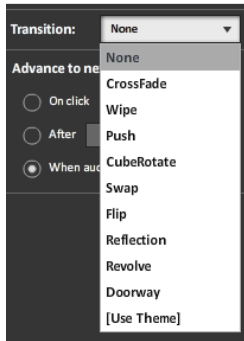


Transitions

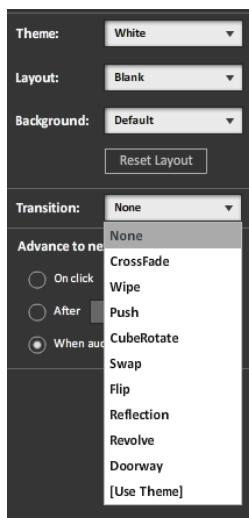
Transitions are an animation between slides when the presentation is played. When a **Transition** is applied to a slide it will determine how the slide is animated onto the presentation.



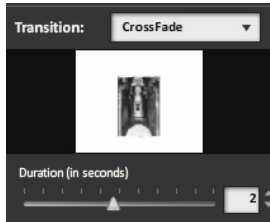
Adding a Transition

Transitions can be added on the slide level or as part of a theme.

1. Click on the thumbnail of the slide in the Slide Tray
 - a. Multiple slides can be selected by holding the Control (Ctrl) key for PCs or Command key for Macs
2. Use the pull-down menu to click on and select a **Transition**



3. Once the **Transition** is applied, a thumbnail of the slide will display how the animation will occur



4. **Duration (in seconds)**: Sets how long the animation will occur

ADVANCED NOTE: For more information about creating and editing themes, view additional documentation at: <http://www.sliderocket.com/support/documentation.html>

Setting Transition Direction

All **Transitions**, except for **Crossfade**, allow a direction of animation to be set:

- **Wipe**
- **Push**
- **CubeRotate**
- **Swap**
- **Flip**
- **Reflection**
- **Revolve**
- **Doorway**

To apply the direction to the **Transition**:

1. Add the **Transition** to the slide
2. Use the pull-down menu to click on and select the available direction. Not all directions are available for all transitions

